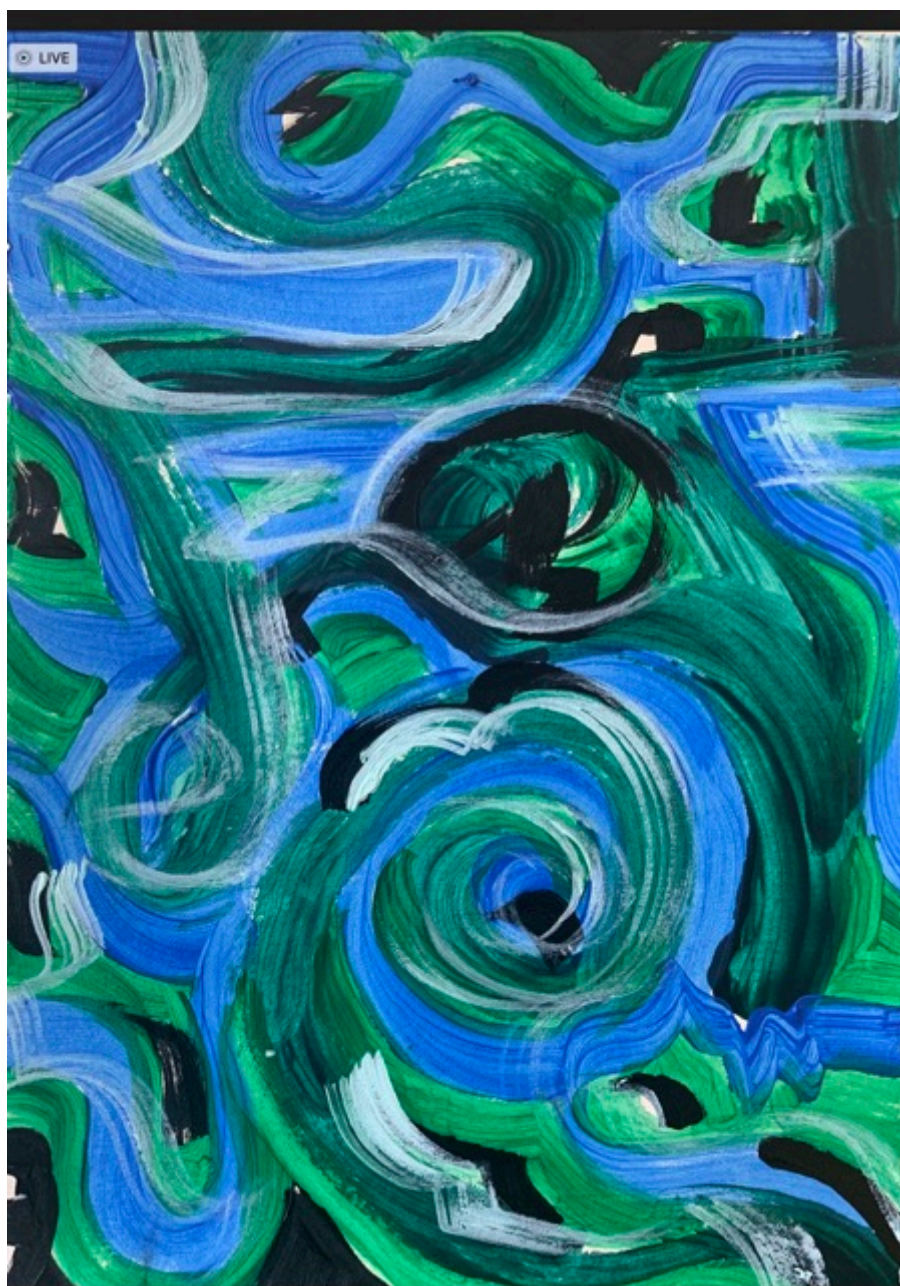




## Seveneightsix

R 3,333.00 ex. vat



Ta'widh : Merciful Prescriptions. Apotropaic magic. Tawiz, protective sufi science against evil eye and djinn. Inspired by the concept of abjad the sufi numerology science. Thought to be slave codes of our ancestors that were brought to South Africa via Dutch East India Trade Routes. A Counter narrative history, our ancestors weren't slaves, they were highly intelligent, highly skilled and enslaved. 786 is the formula that calculates to “Bismillah al-Rahman al-Rahim”, meaning, 'In the name of God, the Most Gracious, the Most Merciful'. This is a spiritual intelligence. This series of 8 is the introduction to my exploration of spiritual wellness in visual language and is designed as cultural artefacts to engage with the audience in opening discussions around misconceptions perpetuated by conservatism that hold us captive from higher consciousness. In this way, they are further utilised as performative propositions and the artist's role as an intermediary.

Frame	None
Medium	Acrylic and Indian Ink on Fabriano
Height	35.00 cm
Width	24.00 cm
Artist	Imaan Latif
Year	2022

