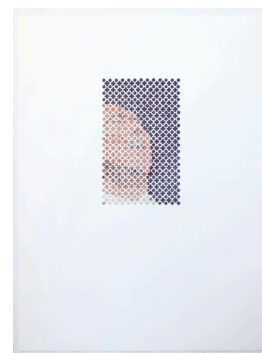
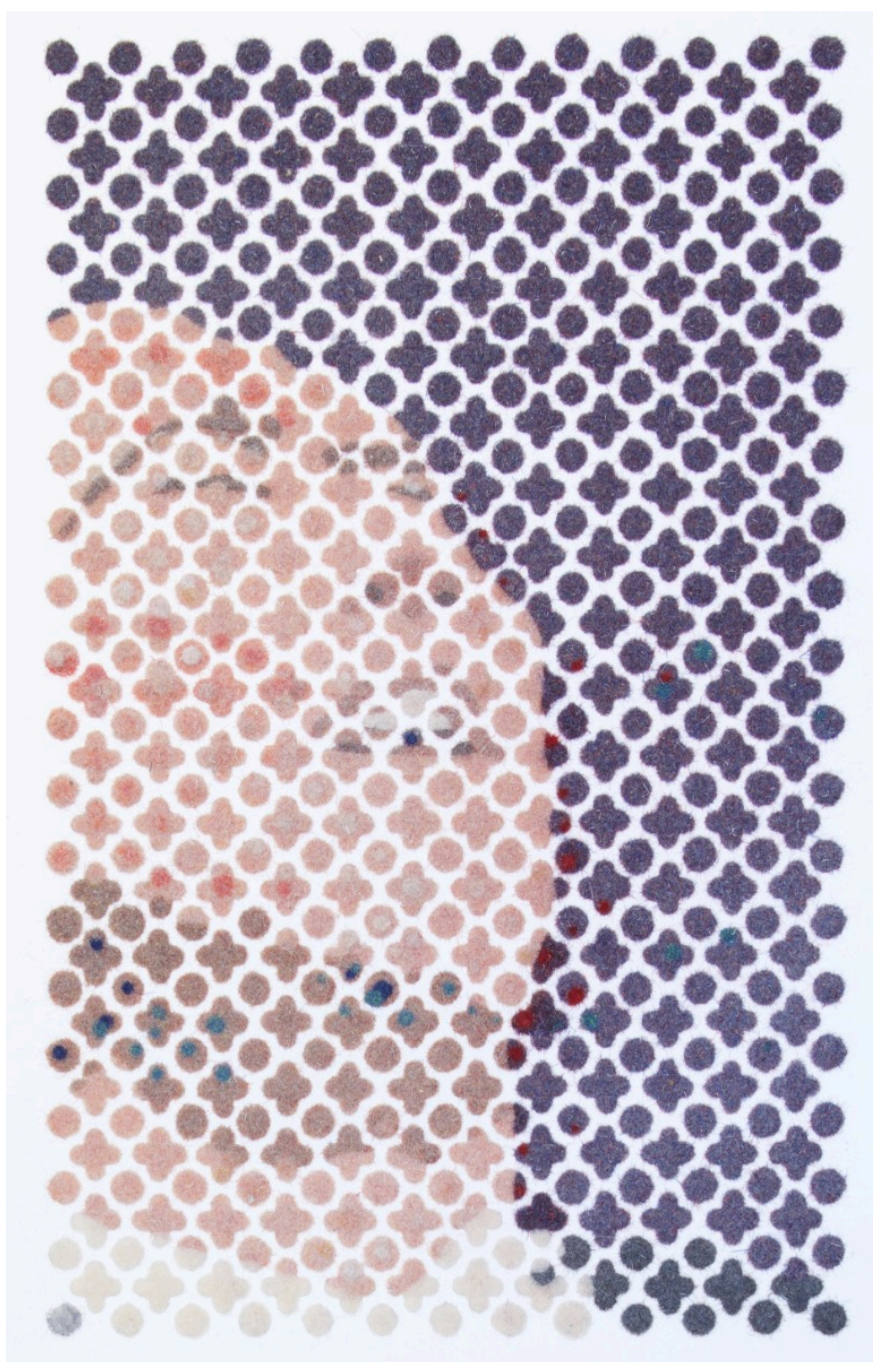




Those who Weep 1

R 39,000.00 ex.
vat



The series *Those Who Weep* is related to the ongoing series of dust works entitled *Sorry*. Both series allude to our relationship with the natural environment. We may weep, but can we live differently and commit to doing less harm, including, in the end, to ourselves? The medium here has the appearance of felt against the paper background. In fact the woollen 'dust' is applied in dust form to individually painted areas of glue in a slow and painstaking process. The felt-like surface is reminiscent of children's craft or toys. It suggests the transience of our dust-to-dust presence, and perhaps also an idea somehow cushioned or softened to make it less painful.

Frame	Slim, square profile, light natural wood
Medium	Woollen dust and archival glue on paper
Location	Cape Town, South Africa
Height	74.00 cm
Width	56.00 cm
Artist	Bonita Alice
Year	2022

