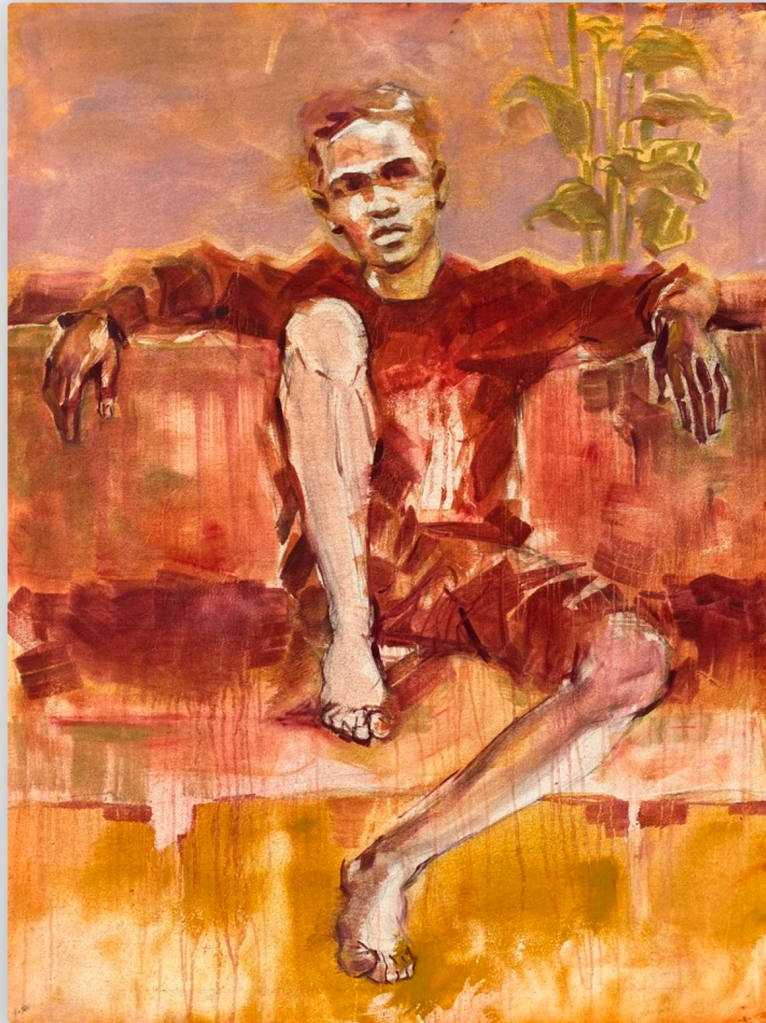




---

**Self-Possession**

**Call for Price**



## Worede's Intuitive Process

While Worede uses sketches as a starting point, his paintings are largely improvised. The artwork transforms as he interacts with space, surface, and colour. He reduces his compositions to basic elements of colour and shape, viewing this intuitive process as akin to abstraction. Line and form are added only later when he chooses to highlight a figure from the vibrant layers of colours he has created.

Colours hold so much significance as form in Worede's art. He meticulously selects hues and uses layered washes to evoke specific moods for feelings in the viewer.

In contrast to the vibrant backgrounds, the figures within the painting rarely engage with the viewer. They appear somewhat absent and preoccupied, perhaps reflecting a connection to spiritual realms rather than the physical world.

Frame	None
Medium	Oil on canvas
Location	Addis Ababa, Ethiopia
Height	125.00 cm
Width	95.00 cm
Artist	Birhane Worede
Year	2023

