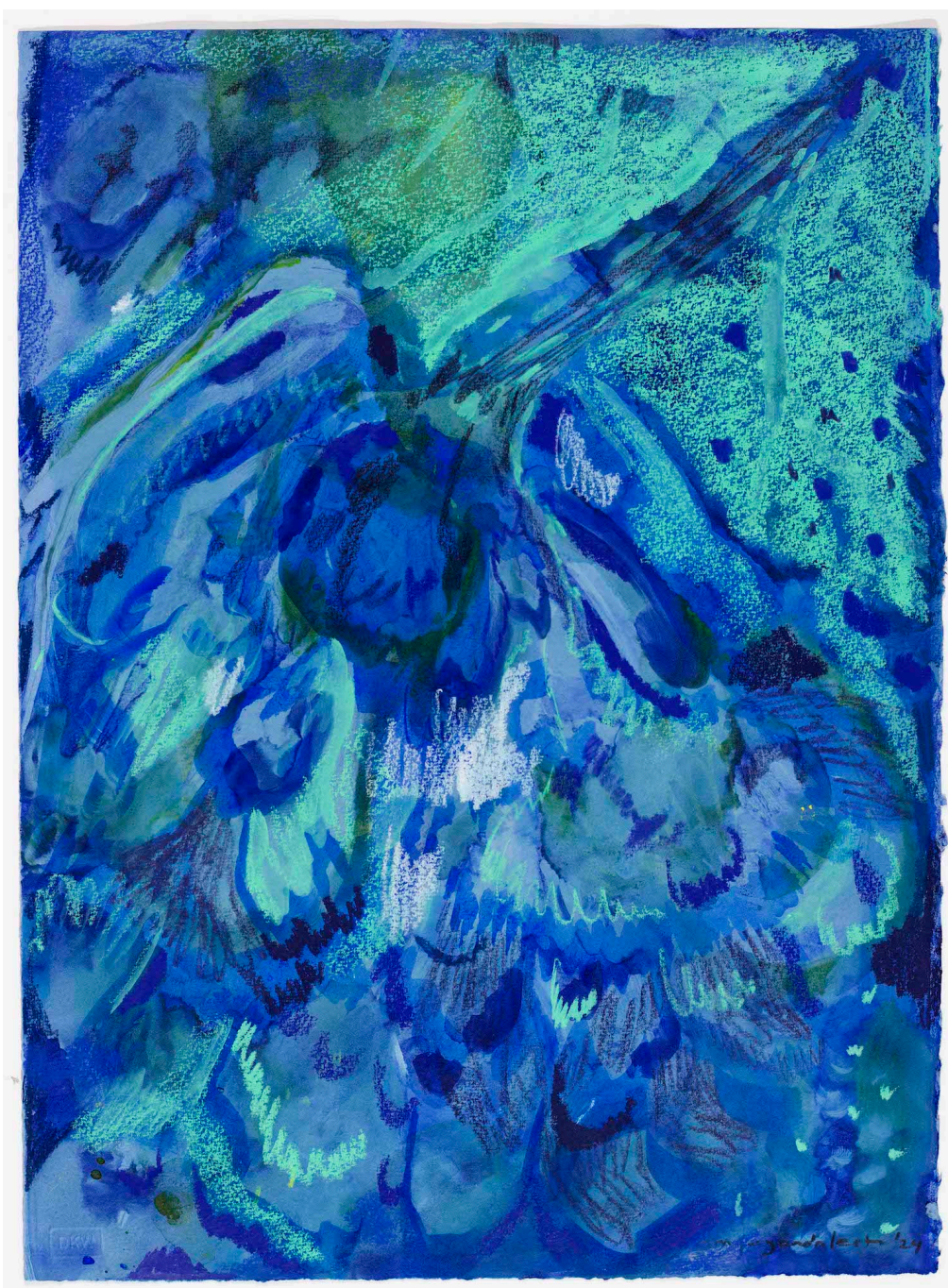




Toward Silence

R 4,820.00



An Original abstract floral work by Cape Town based artist, Amy Ayanda Lester. This is an Oil based monotype with hand work in Stabilo Woody's, Caran d'ache crayons and pencil crayon. Artwork printed on 300 gram Somerset Satin./p>

Frame	None
Medium	Oil Based Monotype with Hand Work in Stabilo Woody's, Caran D'ache Crayons and Pencil Crayon on 220gsm Fabriano Cromia
Location	Cape Town, South Africa
Height	38.50 cm
Width	28.00 cm
Artist	Amy Ayanda Lester
Year	2024

