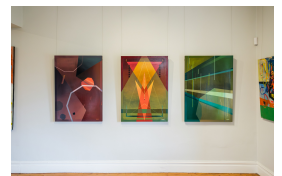
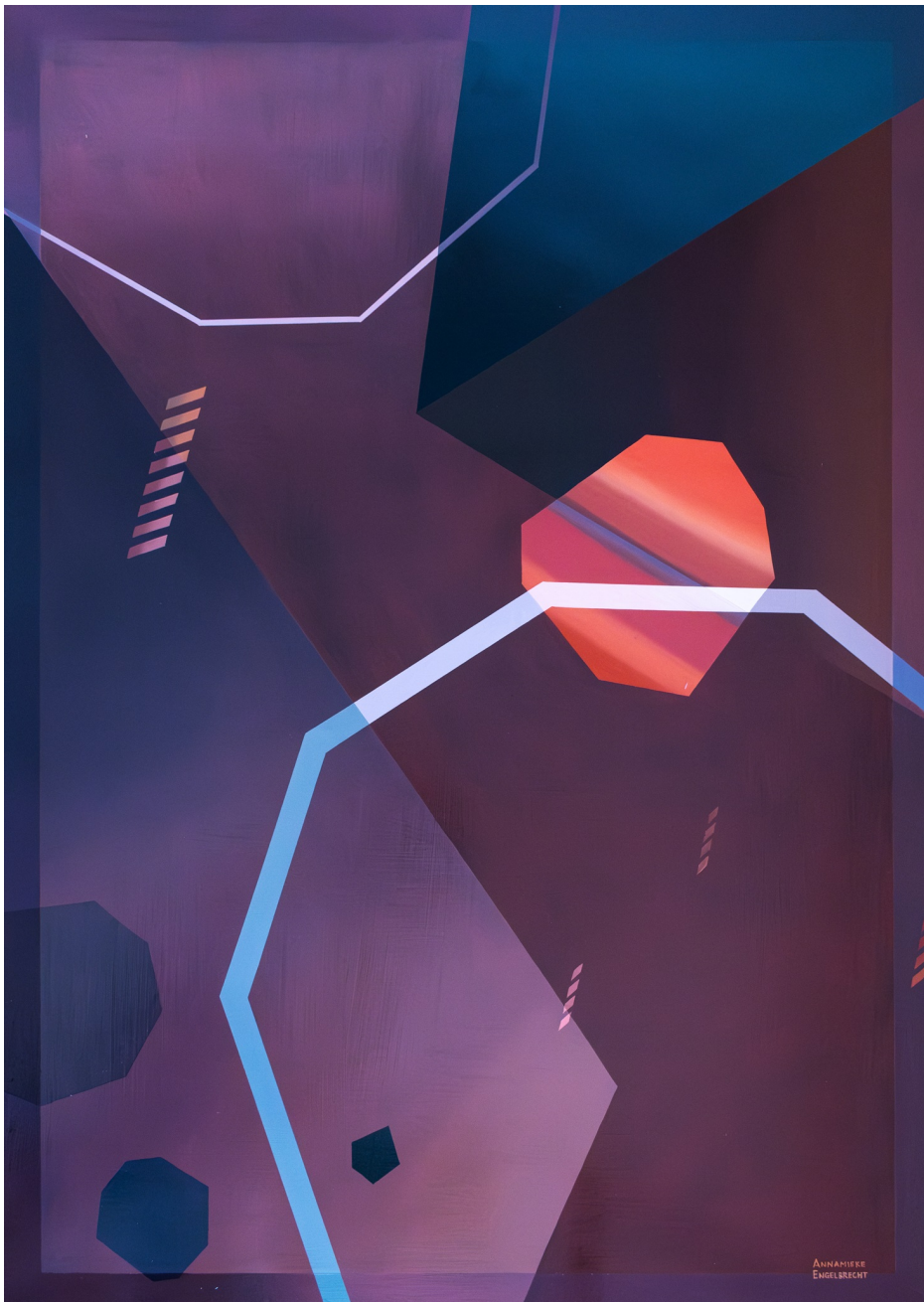




Saturn Rings Are Falling Down

R 16,800.00 ex.
vat



Signed by the artist – bottom right.

In several of my paintings, I draw inspiration from intriguing astronomical facts, weaving common themes throughout them. These themes revolve around the impending end of the world, the overwhelming vastness of the universe that surpasses human comprehension, and the enigmatic mysteries that may forever elude explanation. "Saturn's Rings are Falling Down" reflects the remarkable and scientifically grounded phenomenon that Saturn's rings are indeed gradually disintegrating. NASA's research indicates that the rings are losing material, with particles raining down onto Saturn's surface at a rate that suggests they could vanish in about 100 million years—a blink of an eye in cosmic terms. The process known as "ring rain" occurs as Saturn's gravitational pull draws these particles inward. This celestial erosion is a stark reminder of the temporality that pervades even the grandest of natural spectacles. The painting captures the moment of this disintegration, a poetic visualisation of cosmic impermanence. Another key theme running through my work is the overwhelming vastness of the universe, a concept that surpasses human comprehension. For instance, the observable universe is estimated to be about 93 billion lightyears in diameter, containing approximately two trillion galaxies. Each galaxy, like our Milky Way, is home to billions of stars and potentially even more planets. This sheer scale is almost unfathomable and serves as a backdrop to the tiny and fleeting nature of human life. This vastness often invokes a sense of awe and existential introspection. The overwhelming scale of the universe dwarfs human concerns and ambitions, reinforcing the notion that, in the grand cosmic narrative, humanity is but a minor character. Lastly, the enigmatic mysteries that may forever elude explanation are a significant source of inspiration. The universe is replete with phenomena that challenge our understanding and defy current scientific explanation. Dark matter and dark energy, which together comprise about 95% of the universe, remain largely mysterious. Black holes, with their event horizons beyond which nothing can escape, pose profound questions about the nature of space, time, and reality itself. The Fermi Paradox, which questions why, despite the high probability of extraterrestrial life, we have yet to encounter any evidence of it, adds to the sense of cosmic mystery. These enigmatic elements inspire artworks that explore the unknown and the unknowable. They evoke a sense of wonder and curiosity, prompting viewers to ponder the limits of human knowledge and the possibility that some aspects of the universe may remain beyond our grasp. The mysterious and often unsettling nature of these phenomena is a testament to the complexity and vastness of the cosmos. By drawing from these concepts, the paintings create a space for contemplation and awe, highlighting the delicate balance between knowledge and mystery in our quest to comprehend the universe.

Frame	None
Medium	Oil on Panel
Location	Cape Town, South Africa
Height	120.50 cm
Width	84.50 cm
Artist	Annamieke Engelbrecht
Year	2024

