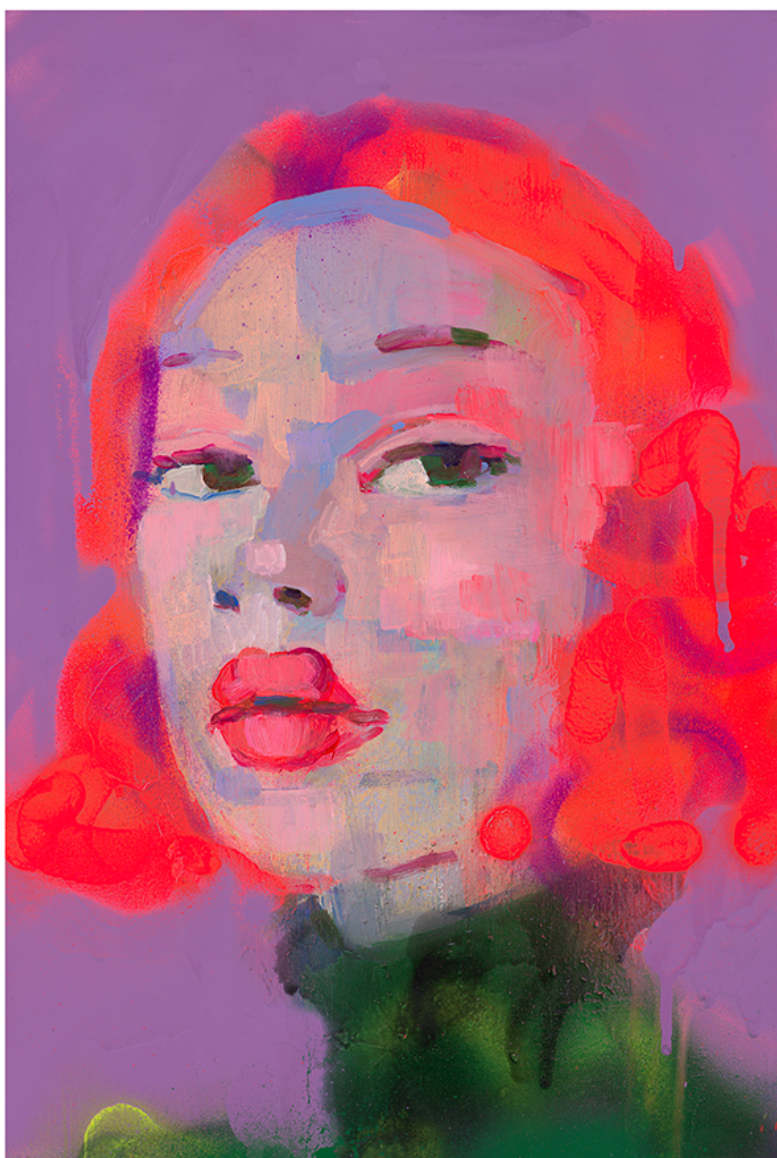




Kilmany-Jo Liversage Print

R 998.00



/48

Kilmany-Jo Liversage

(b. 1973, South Africa) [Kilmany's](#) rendering of female subjects is inspired by Renaissance-era portraiture and, by adopting the language of graffiti or urban art, she updates, renews and challenges the conventions of painting.

Frame	None
Edition Size	48
Medium	Printed on Felix Schoeller True Fiber with Archival Pigment Inks
Location	Cape Town, South Africa
Height	97.70 cm
Width	42.00 cm
Artist	Kilmany-Jo Liversage
Year	2024

