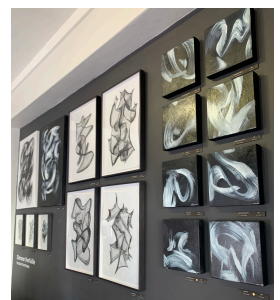
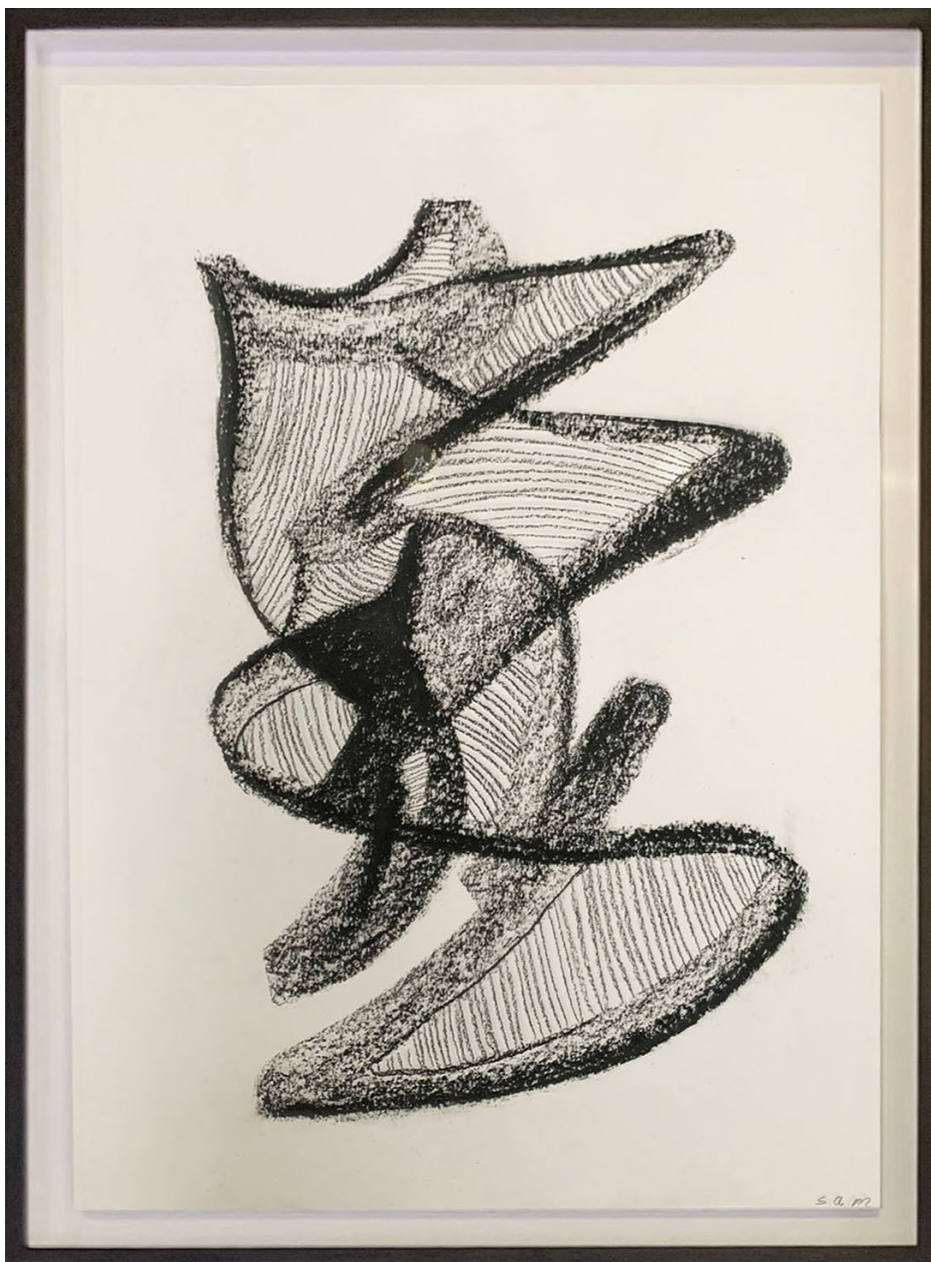


## Slow progression seemingly unwinds

R 5,950.00 ex. vat



This piece is part of a larger body of work titled, Thought Patterns.

THOUGHT PATTERNS delves into my internal dialogue about productivity, growth, stagnation. The cycles of thought that shape my creative process expressed in this body of work. A sense of simplicity is created by stripping away the distractions of colour to focus on form, line, and composition. I've found that patterns emerge, intertwining to form a tapestry of connected thinking. The artworks reflect my exploration and witnessing of the evolving nature of recurring thoughts, the tension between movement and stillness, and how moments of meditative flow can paradoxically fuel true progress and expression.

Frame	Plain black box frame with glass. The drawing is floating inside.
Medium	Charcoal on 200gsm Fabriano
Location	Cape Town, South Africa
Height	50.50 cm
Width	66.00 cm
Artist	Simone Verfaillie
Year	2024

