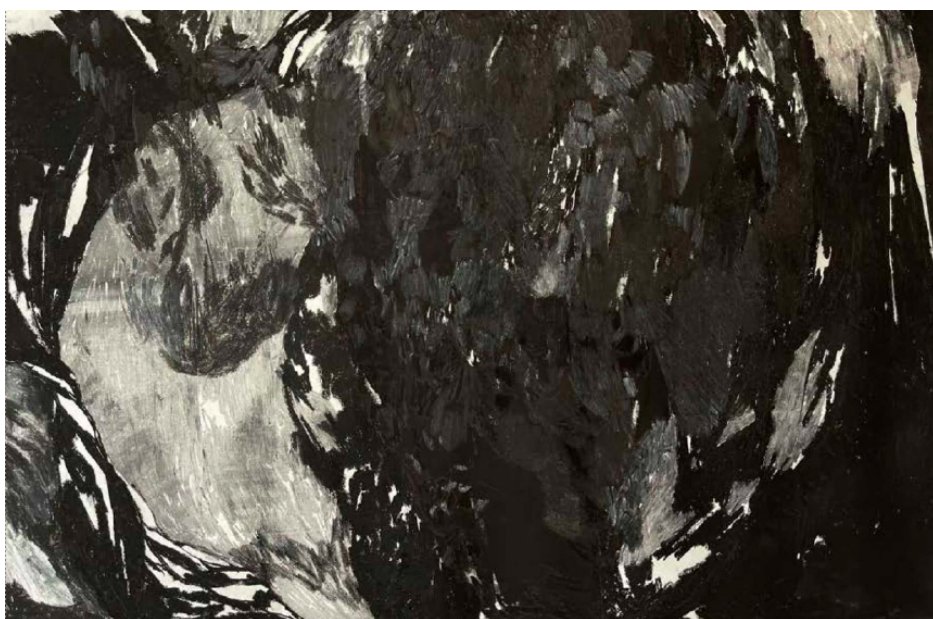




Answer the call

**R 52,500.00 ex.
vat**



This painting is part of a larger body of work titled, *A Feeling, Called Life* – a recent Solo Exhibition of Chelsea Young. In her newest body of work, Chelsea transitions from the large-scale, expressive oil paintings crafted in her Cape Town studio to more intuitive textiles created in her current Botswana studio.

| | |
|----------|---|
| Frame | Black stained, wooden box frame. Drawing is floating on cream mountboard. |
| Medium | Charcoal & Graphite on paper |
| Location | Cape Town, South Africa |
| Height | 160.00 cm |
| Width | 109.00 cm |
| Artist | Chelsea Young |
| Year | 2024 |

