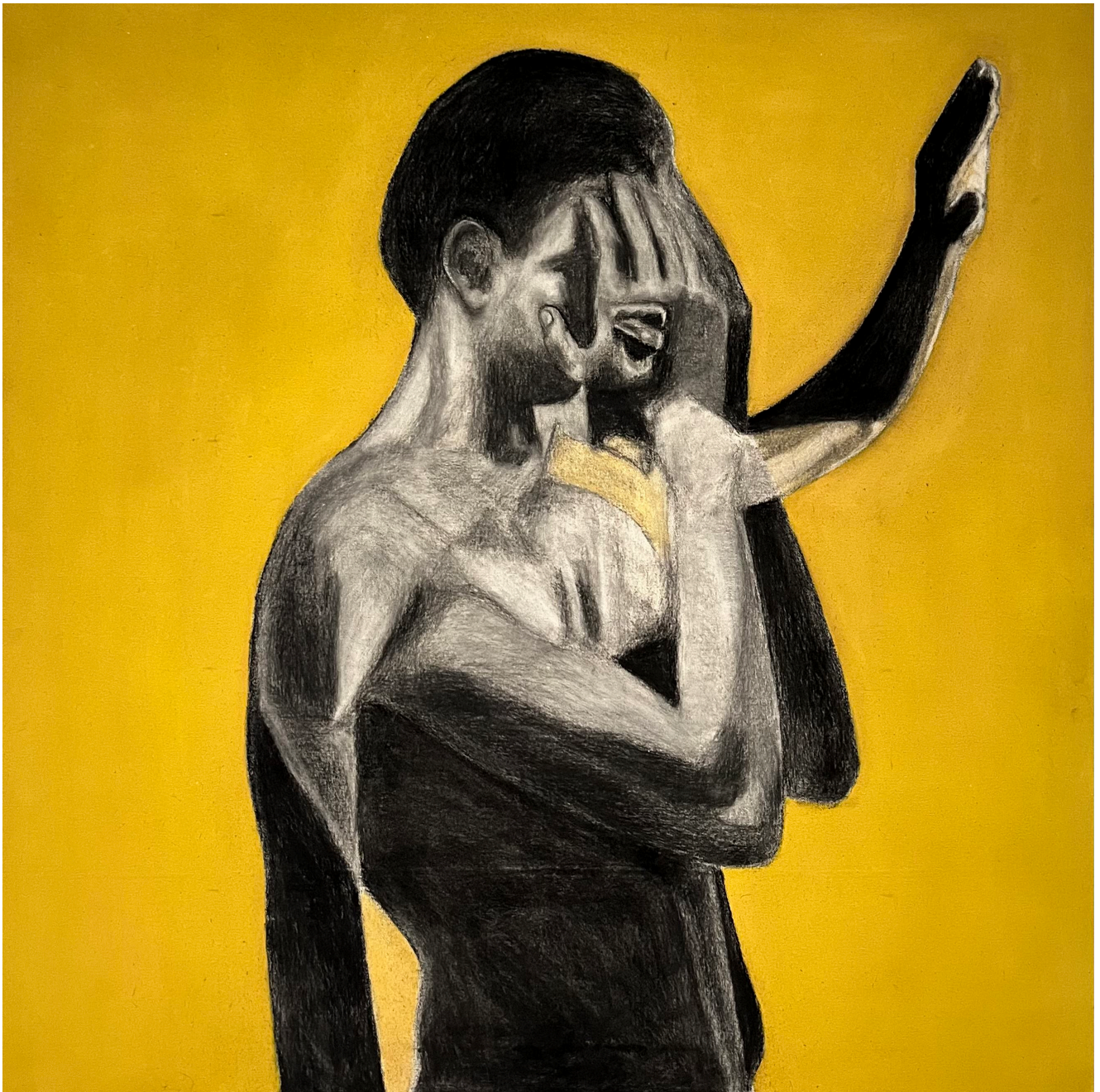




**The Eye of the Beholder**

**R 23,600.00**



Playing on the notion that "beauty is in the eye of the beholder," the artwork explores how beauty or truth is subjective. The man might be covering his face not out of fear or discomfort but because he's overwhelmed by the complexity or imperfection of what he sees around him.

Frame	None
Medium	Charcoal, chalk and oil on canvas
Location	Zanzibar, Tanzania
Height	100.00 cm
Width	100.00 cm
Artist	Kay-Leigh Fisher
Year	2024

