

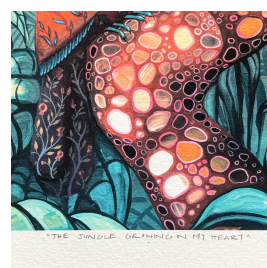
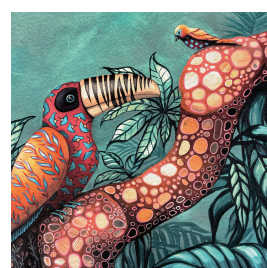


The Jungle Growing in my Heart

R 1,850.00 ex. vat



15/50 "THE JUNGLE GROWING IN MY HEART" INGRID NUSS '14



If you had to visualize what the landscape inside the artist's heart looks like, you would see this scene. It is a lush place of mystery, enchantment, and beauty.

Birds have been symbols of power and freedom throughout the ages. In many myths and legends, birds link the human world to the divine or supernatural realms that lie beyond ordinary experiences.

The two birds form a dialogue in silence as if to always have reasoning within thoughts, decisions, and actions. They are adorned with patterns colouring in life's experiences which all comprise a person, not always complimenting the next, but working together to form the different parts of the whole.

The moon is a large feature in the background, peering out behind the edge of the jungle. The importance of this astronomical body influences such a great part of her day-to-day life, from

cycles within to the ones of the ocean and sky, and it is connected to the landscape of her heart.

What seems to be a tree branch, is representative of her aorta, hence the biological patterns being visible. It forms the anchor of flow within her heart’s center to connect the passage to communicate what is internal to the external world.

Frame	None
Edition Size	50
Medium	Archival Pigment Prints
Location	Wilderness, South Africa
Height	42.00 cm
Width	59.40 cm
Artist	Ingrid Nuss
Year	2024

