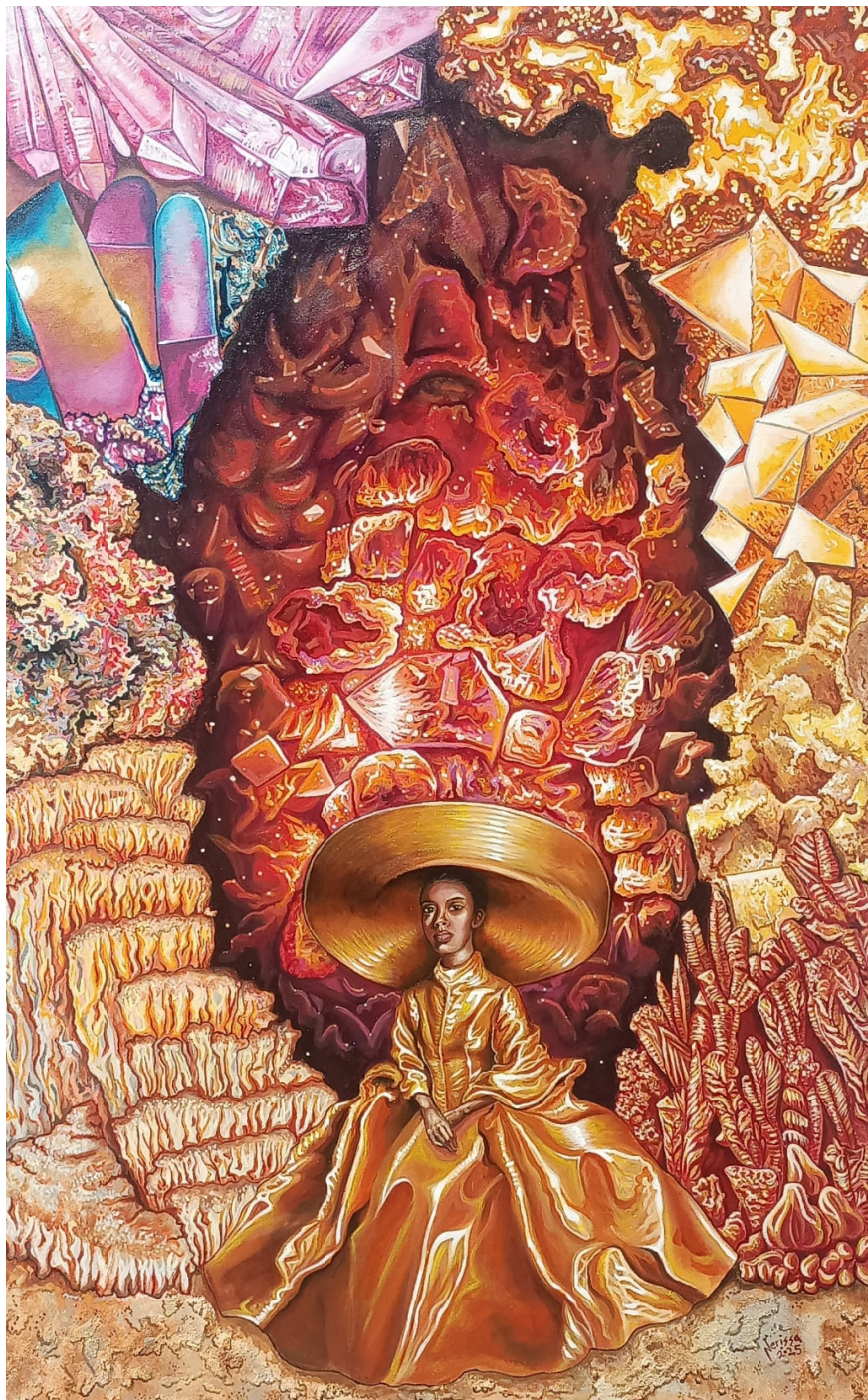




The cathedral of the Metal Mountain

R 52,092.00



The painting depicts a woman seated at the center, wearing a metallic gold dress and a large, circular hat that reflects light like polished metal. She sits calmly amid a vivid, surreal landscape made up of crystalline and mineral formations in gold, red, orange, and purple tones. Behind her, the background appears molten and textured, filled with abstract shapes resembling gems, rocks, and lava. The upper parts show clusters of geometric crystal, pink and blue on the left, golden and orange on the right, while the lower area features layered, rocklike terraces and coral-like forms. The overall effect combines human portraiture with a fantastical, geological environment.

Frame	None
Medium	Acrylic on canvas
Location	Accra, Ghana
Height	110.00 cm
Width	70.00 cm
Artist	Nerissa Brobbey
Year	2025

