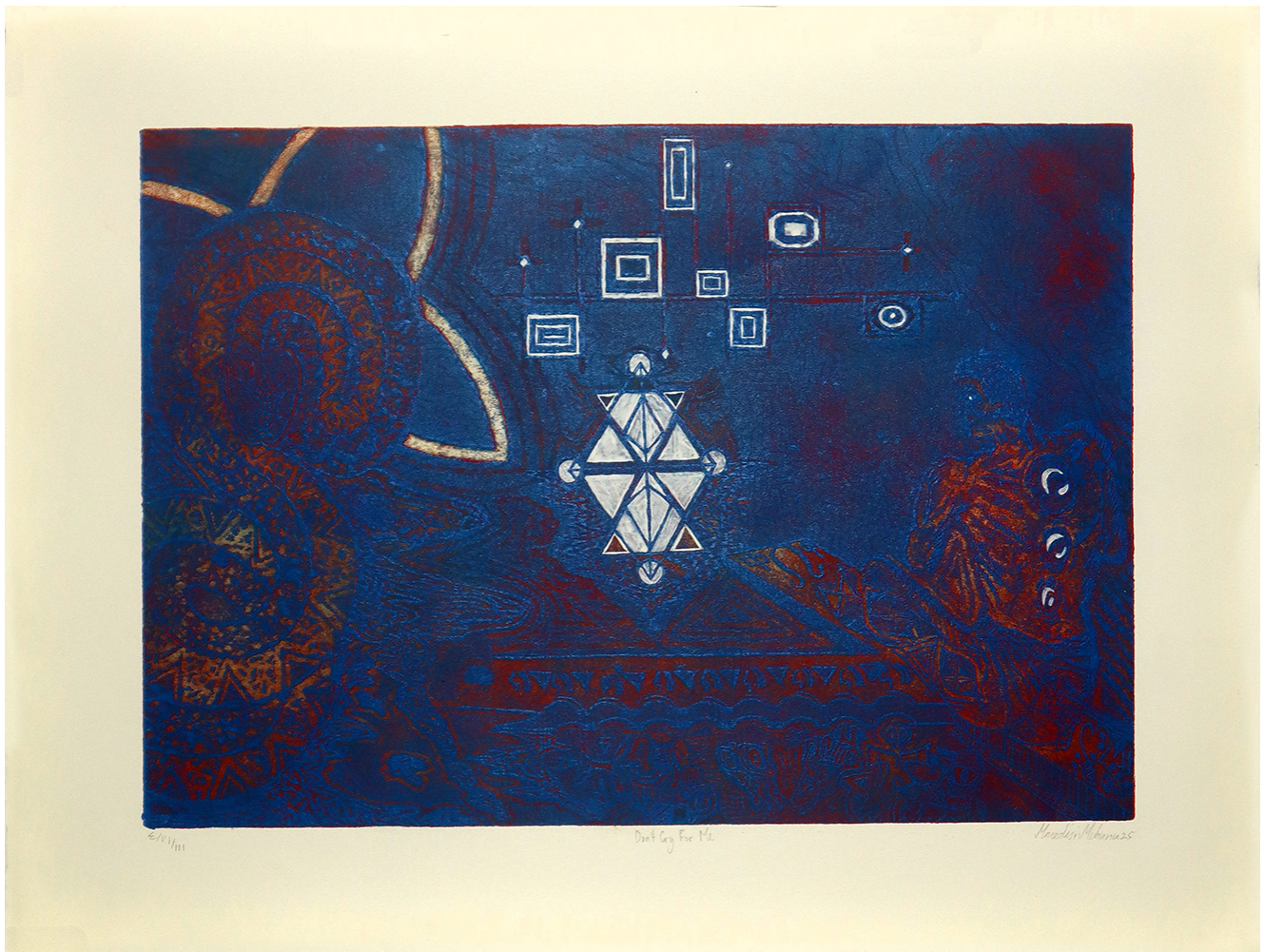




Don't cry for me

R 1,565.22



I describe my art as simple yet complex, inviting interpretation while embedding deep personal meanings through shapes, numerology, and religious symbols. These symbols reflect various faiths and belief systems, representing significant spiritual and cultural importance. In my work, I use various religious symbols to connect with deeper spiritual themes and to reflect on the intersection of faith and personal experience. The cross appears frequently in my pieces, representing love, sacrifice, and the core tenets of the Christian faith. It serves as a powerful symbol of struggle and redemption, capturing the complexities

of belief and doubt in one's spiritual journey.

Frame	None
Medium	Etching
Location	Newtown, Johannesburg, South Africa
Height	48.30 cm
Width	64.80 cm
Artist	Mncedisi Mchunu
Year	2025

