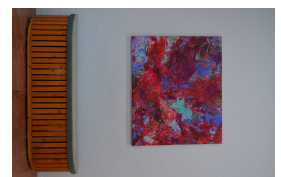
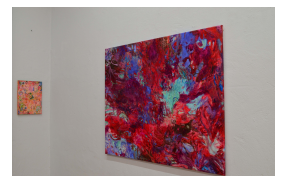
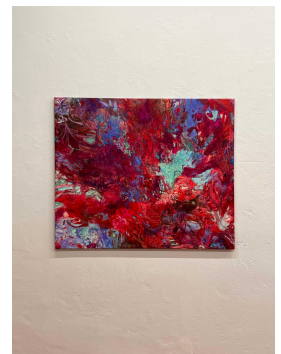
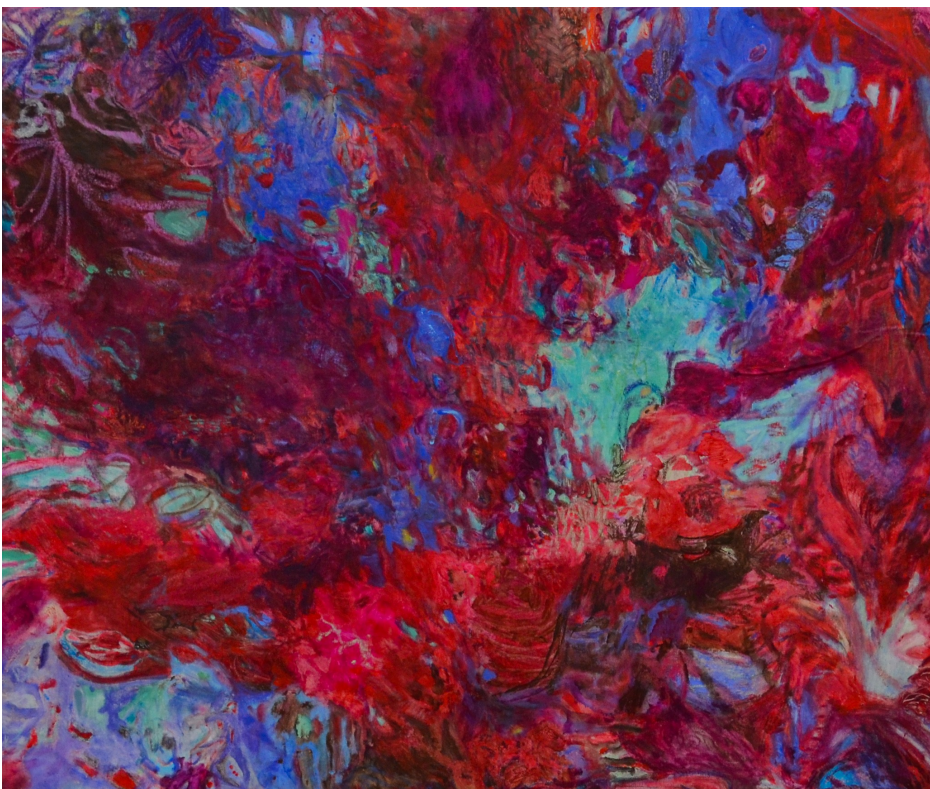




earth under my skin

R 77,000.00



Garden of a Soul is a body of abstract paintings that traces the relationship between inner and outer transformation. The work questions human centrality, opening a metaphysical space where Yasmine Amal reflects on the relationship between ego and soul, earth and human life. Sufi thought and Qur’anic references serve as conceptual anchors, guiding the work without fixing its meaning.

Painting is approached as a method for holding complexity, allowing colour and texture to mediate between meaning. She paints intuitively as she draws on her Amazigh heritage to build up elemental, colour-saturated worlds.

Rather than positioning herself as an author, the self-taught artist understands her practice as an act of transmission, allowing nature and the divine realm to translate the work while she gives it form. The ocean, as both a space for life and an entity of its own, recurs as a guiding metaphor. Amal’s visual language dissolves, merges, redefines borders: between the individual and the collective, nature and human, calculation and imagination. Rooted in indigenous futurism, her practice refuses universalist, linear futures and singular truths, allowing meaning to remain relational

and in flux.

Frame	None
Medium	Acrylic and Oil Pastels on Canvas
Location	Berlin, Deutschland
Height	125.00 cm
Width	105.00 cm
Artist	Yasmine Amal
Year	2025

