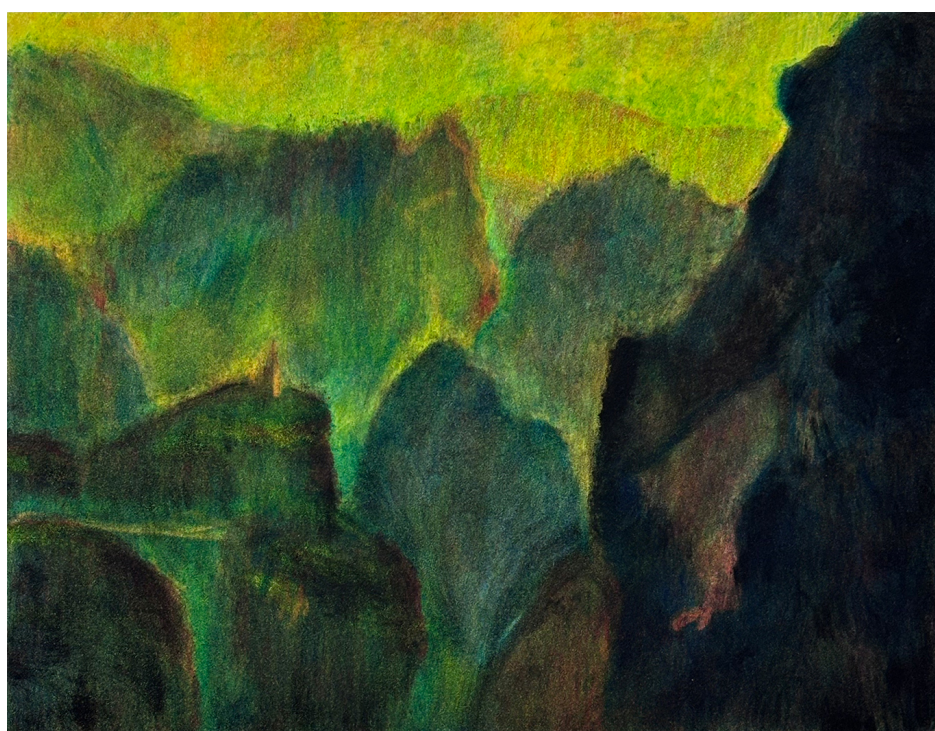




A dreamed-up landscape for Frederic

R 13,000.00



A monotype, a unique print, is produced solely from spontaneous marks on a surface, meaning it is created from a surface that contains no permanent or repeatable marks. Each print is genuinely one of a kind, as the image cannot be duplicated. In contrast, a monoprint includes at least one element derived from a fixed matrix, such as an etched plate, carved block, or stencil, which can be reused to produce an edition. Although each monoprint may be unique due to variations in colouring/inking or additional spontaneous elements, the presence of this repeatable matrix distinguishes it from the monotype.

Frame	None
Medium	Four-plate monotype
Location	Cape Town, South Africa
Height	22.00 cm
Width	28.00 cm
Artist	Zhané Warren
Year	2025

